



# Alexander Hudson Estates

---

Sales Particulars

# Alexander Hudson Estates

Denewood, Killingworth Village, NE12



# The Property

Alexander Hudson Estates are delighted to bring to the market this well presented and much loved four bedroom detached family home. Built in 1988, the property retains a wealth of original character and enjoys a peaceful, tucked-away position within a highly sought-after residential development in Killingworth Village.

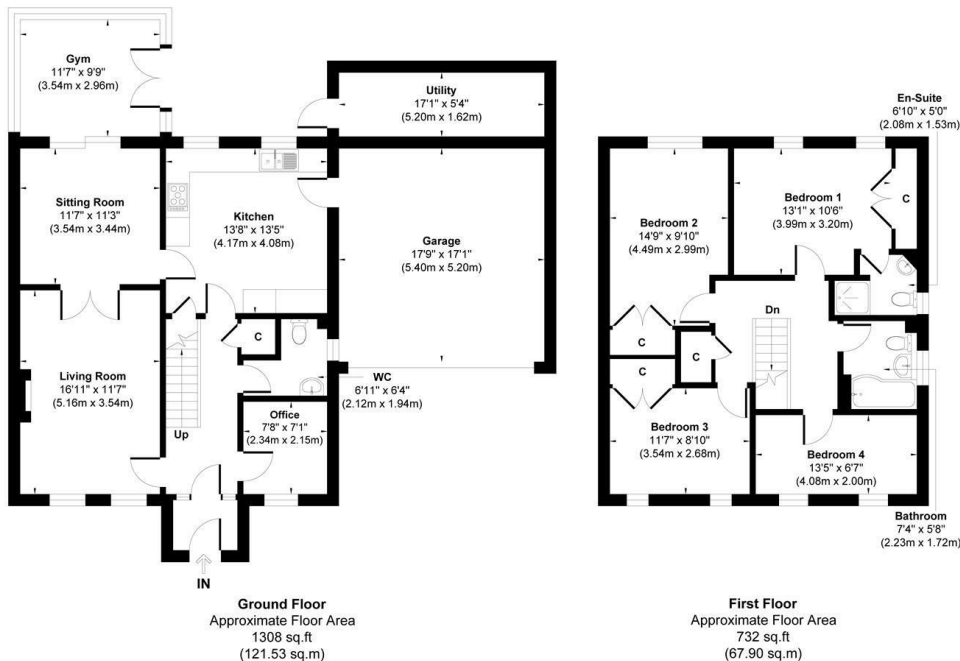
Set back from the main road, the property benefits from attractive greenfield views to the front, creating a quiet and private setting. The accommodation briefly comprises an entrance hallway with stairs to the first floor and a convenient ground floor WC. To the front of the property is a useful home office/study, ideal for remote working or hobbies. The principal reception space features a main living room positioned to the front, with double doors leading through to a second living room/snug, offering a versatile additional reception area. This, in turn, opens via sliding patio doors into the conservatory, which overlooks the rear garden. The kitchen provides space for dining and also offers internal access directly into the garage.

To the first floor, there are four well-proportioned bedrooms, including a spacious principal bedroom with an en-suite shower room. The accommodation is completed by a well appointed family bathroom.

Externally, the property enjoys open green views to the front with an open plan lawned garden. To the rear, there is a fully private and enclosed garden, featuring both lawn and patio seating areas, ideal for outdoor dining and relaxation. The property further benefits from an attached double garage with internal access, complete with an electric vehicle charging point, and a driveway providing ample off-street parking.

Killingworth Village offers an exclusive, highly sought-after setting, valued for its rural feel and strong community atmosphere. It combines peaceful surroundings and green spaces with excellent connectivity, providing convenient access to local amenities, transport links, and well-regarded schools.

Freehold  
Council Tax: F  
EPC Rating: 72



Approx. Gross Internal Floor Area 2040 sq. ft / 189.43 sq. m (Including Garage)

Illustration for identification purpose only, measurements approximate and not to scale, unauthorized reproduction is prohibited. All rights reserved for Alexander Hudson Estates



---

Alexander Hudson Estates  
The Printworks  
20 Arrow Close  
NE12 6QN

0191 268 7433  
[sales@alexanderhudson.co.uk](mailto:sales@alexanderhudson.co.uk)